



m/t ICARUS III



SHIP'S PARTICULARS

GENERAL

NAME	ICARUS III	YEAR OF BUILT	1997
FLAG	CYPRUS	WHERE BUILT	KHERSON, UKRAINE
PORT OF REGISTRY	LIMASSOL	CLASS	PRS, AI OIL CARRIER
CALL SIGN	P3WM9	TYPE OF VESSEL	MOTOR TANKER
IMO NUMBER	9145413	CLASS OF VESSEL	KM CRUDE OIL TANKER ESP
RADIO CALL SIGNAL	P3WM9	COMMERCIAL MANAGER	MILIANA SHIPMANAGEMENT LTD.
MMSI	21335000		
E-MAIL	icarus@miliana.eu		
MOBILE	+ 48 502 193 200		

PARTICULARS OF VESSEL

DWT	32300	DEPTH	18.00 m
FULL SUMMER DRAFT	12.03 m	KEEL TO TOP	46.80 m
FREEBOARD LIGHTSHIP	14.564 m	LIGHTSHIP	10933 MT
FREEBOARD ON FULL DRAFT	5.986 m	BALLAST CONDITION	13000 tonnes
GT	21605	CUBIC CAPACITY	35684.4 m ³
NT	11031	SLOP TANK CAPACITY	1214.0 m ³
SUEZ	22974.89	CARGO TANKS FULLY	FULLY COATED
PANAMA	18018 (net Tonnage in LT)	CLEAN IG SYSTEM	PERMEA
TPC ON SUMMER SUMMER DWT	39.60	VENTLINE SYSTEM	PV BREAKER
LOA	182.14	HEATING ARRANGEMENTS	n/a
BEAM (extreme)	25.30	SAFE WORKING LOAD OF DECK CRANE	10 tons
LENGTH BETWEEN PP	167.76 m	SAFE WORKING LOAD OF PROVISION CRANE	3.5 tons

CARGO ARRANGEMENTS

NUMBER OF MANIFOLDS ON EACH SIDE	8
SIZE OF MANIFOLD	10 inches
DISTANCE BOW TO CENTER MANIFOLD	87.2 m
DISTANCE AFT TO CENTER MANIFOLD	95.0 m
DISTANCE DECK TO CENTER MANIFOLD	2.0 mtr

MOORING ARRANGEMENTS

NUMBER /LENGTH/DIAMETER OF WIRES	NO WIRES
NUMBER /LENGTH/DIAMETER MOORING ROPES	6 pcs on drums/200m/64mm dia
BREAKING STRAIN MOORING ROPES	46.2kN

PUMPS

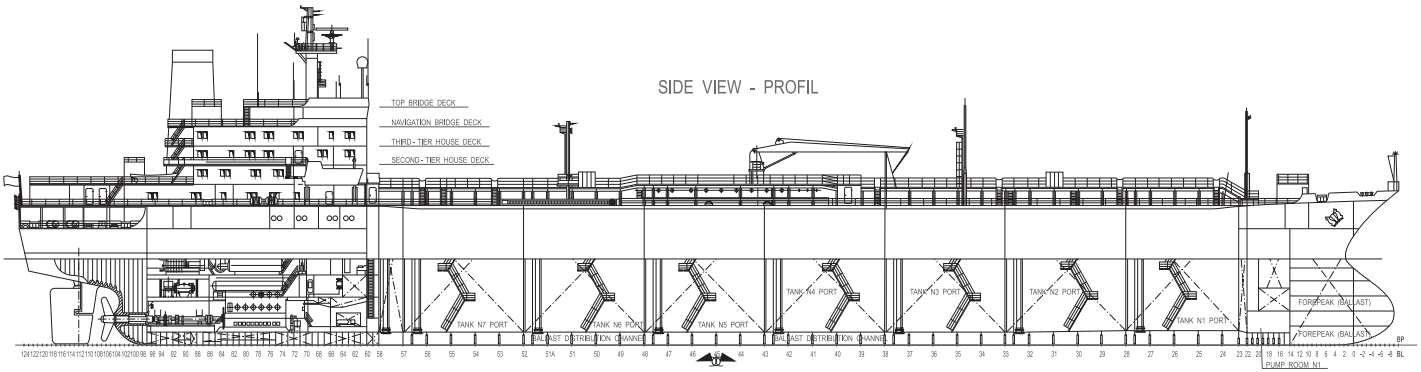
SYSTEM MAKER	FRAMO
NUMBER OF CARGO PUMPS	Total 16
CAPACITY OF CARGO PUMPS	425 Cu.m/hr & 2 pumps on slops capacity 250 Cu.m/hr

BALLASTING SYSTEM

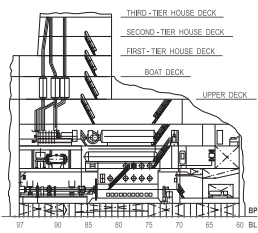
TYPE OF BALLAST	CLEAN BALLAST TANKS (double hull)
MAIN BALLAST	2 pcs. 1000 Cu.m/hr (each pumps)
EDUCTOR	1 : 100 Cu.m/hr

NAVIGATION & COMMUNICATION EQUIPMENT

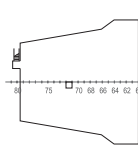
MAGNETIC COMPASS	C. PLATH HAMBURG	MF/ HF RADIOTELEPHONE	SAILOR-6301
GYRO COMPASS	SPERRY MARINE	VHF RADIOTELEPHONE	SAILOR-6222-2 pcs
	NAVIGAT X MK2	VHF PORTABLE	NAVICO-AXIS 250-3pcs
RADAR 1	ATLAS 9600ARPA IS (10 cm)	SATELITE EPIRB	MC MURDO-E3-2 pcs
RADAR 2	ATLAS 9600 TMI X (3 cm)	SAR TRANSPONDER	SART JOTRON-TRON SART-2 pcs
RADAR 3	JRC JMA 9122-6XA	SSAS	SAILOR-TT 3000SSA
NAVTEX RECEIVER	FURUNO NX 500	AIS	FURUNO-FA 100
GPS	KODEN KG 98	LRIT	TT 4TT-091
GPS	FURUNO GP 80	VDR	NETWAVE/ RUTTER VDR-100G3/S
DOPPLER LOG	ATLAS DOLOG 20		
ECHOGRAPH	ATLAS 481 DIGIGRAPH		



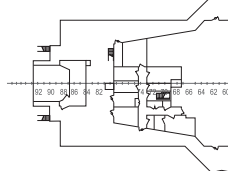
LONGITUDINAL SECTION



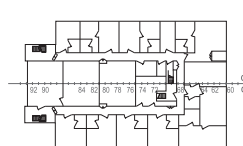
TOP BRIDGE DECK



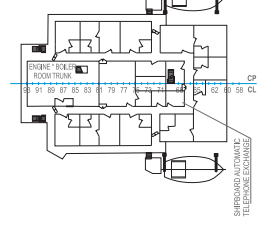
NAVIGATION BRIDGE DECK



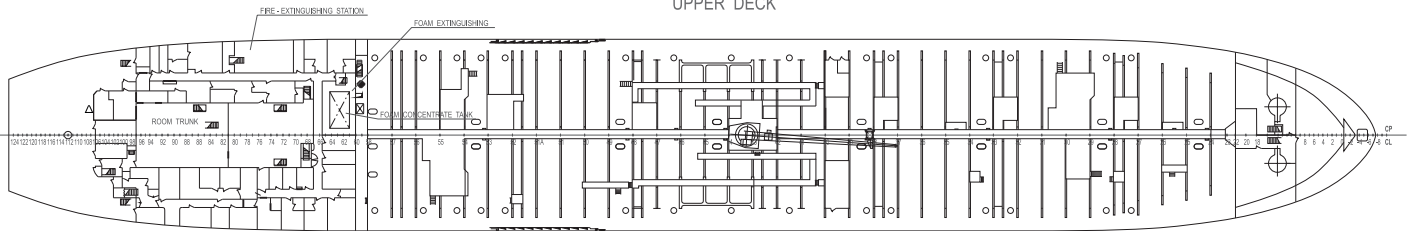
THIRD - TIER HOUSE DECK



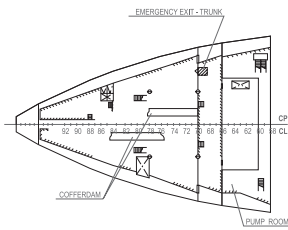
SECOND - TIER HOUSE DECK



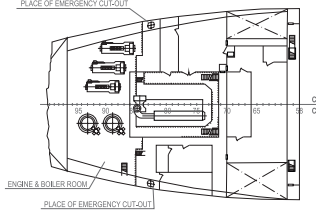
UPPER DECK



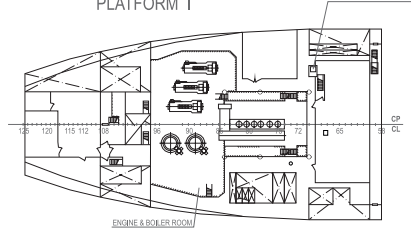
HOLD



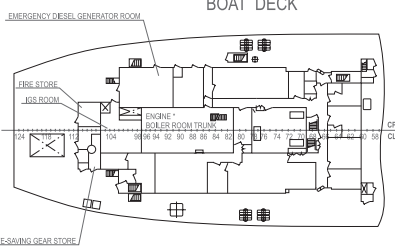
PLATFORM II



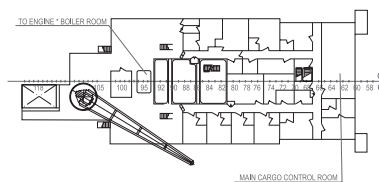
PLATFORM I



BOAT DECK



FIRST - TIER HOUSE DECK



FORECASTLE DECK

